



**GOVIRTUAL**

**Go Virtual Nordic AB**

Askims Verkstadsväg 5A

436 34 Askim

Sweden

Phone: +46 (0)31 7488870

Fax: +46 (0)31 286205

Email: [info@govirtual.se](mailto:info@govirtual.se)

Web: [www.govirtual.eu](http://www.govirtual.eu)

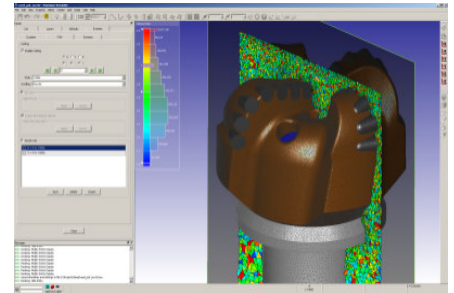
## Pointwise Meshing Seminars

**Go Virtual invite you and your colleagues to attend a seminar on mesh generation for CFD.**

Pointwise is a state of the art high-end general purpose meshing package. It comes with capabilities to do both tet/prism-, hex- and hybrid meshes. Advanced automation capabilities comes combined with possibilities of high user control over the mesh. Pointwise is the next generation meshing software based on the heritage of Gridgen packaged in a modern, intuitive and easy-to-use GUI.

### Pointwise key features:

- **High quality tet/prism & hex meshing**
- **Advanced automation capabilities**
- **New modern GUI**
- **Best in class prisms generation**
- **Easy to learn and use**



### Agenda:

10:00 Registration

10:15 Welcome and Introduction: Go Virtual

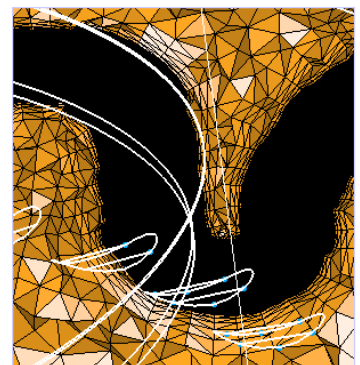
10:45 Introduction to Pointwise: Pointwise

12:00 Lunch

13:00 User presentation: LM-Glasfiber

13:30 Pointwise Demos: Pointwise

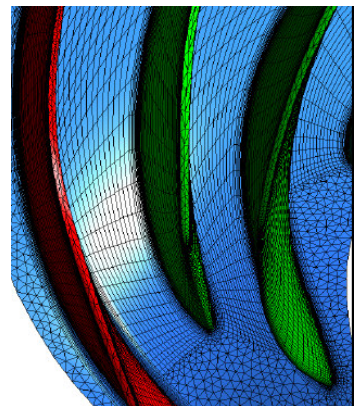
15:00 Closing



### Date & Location:

**March 23:**

*LM Glasfiber  
Jupitervej 6  
6000 Kolding  
Denmark*



Register via email to  
[per.osterdahl@govirtual.se](mailto:per.osterdahl@govirtual.se)  
before March 12



LM Glasfiber



Reliable CFD Meshing