

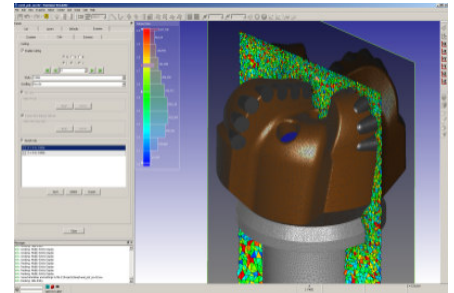
## Pointwise Meshing Seminars

Go Virtual invite you and your colleagues to attend a seminar on mesh generation for CFD.

Pointwise is a state of the art high-end general purpose meshing package. It comes with capabilities to do both tet/prism-, hex- and hybrid meshes. Advanced automation capabilities comes combined with possibilities of high user control over the mesh. Pointwise is the next generation meshing software based on the heritage of Gridgen packaged in a modern, intuitive and easy-to-use GUI.

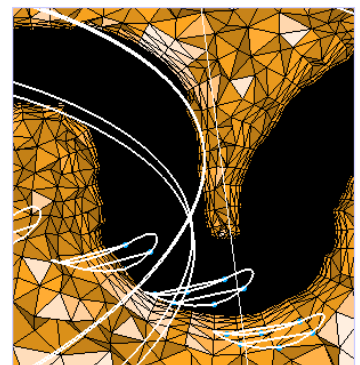
### Pointwise key features:

- High quality tet/prism & hex meshing
- Advanced automation capabilities
- New modern GUI
- Best in class prisms generation
- Easy to learn and use



### Agenda:

- 10:00 Registration
- 10:15 Welcome and Introduction: Go Virtual
- 10:45 Introduction to Pointwise: Pointwise
- 12:00 Lunch
- 13:00 User presentation: Rolls-Royce Marine
- 13:30 Pointwise Demos: Pointwise
- 15:00 Closing



### Date & Location:

March 24:

Hewlett Packard Sweden AB  
Gustav III Boulevard 36  
Solna, Sweden

Register via email to  
[per.osterdahl@govirtual.se](mailto:per.osterdahl@govirtual.se)  
before March 12

